

ZOOMLION

ZOOMLION ZTC800V5-1R TRUCK CRANE

TECHNICAL SPECIFICATIONS

GQ06313027003000EN

Zoomlion Heavy Industry Science & Technology Co.,Ltd.

ZOOMLION ZTC800V5-1R TRUCK CRANE

TECHNICAL SPECIFICATIONS

GQ06313027003000EN

1 Product characteristics

ZOOMLION ZTC800V552-1R truck crane, which integrates Zoomlion's years of experience in designing and manufacturing mobile cranes with advanced technology, is a new generation of high-performance product developed to meet the oversea market demands. Its performances, such as lifting height, boom length, working speed and lifting capacity, have achieved advanced international level.

This product is a truck crane of full range slewing function, telescopic boom sections and pilot-operated proportional controlled systems. The crane adopts self-manufactured full-width 4-axle special purpose chassis (8×4 drive, offering convenient and flexible hydraulically powered steering), providing wide vision, spacious cab and luxurious equipment.

The latest pilot-operated proportional directional control valve, variable pump and gear pump system ensure that each executive mechanism makes full use of its working capability. The easy-controlled, flexible, reliable and stepless speed regulated joysticks (L / R) can provide the crane with smooth simultaneous movements between "Spool winches up", "Reel winches off", "Derricking", "Slewing" and "Telescope boom in / out", which greatly improve the crane's working efficiency. The safety devices such as relief valve, balance valve, hydraulic lock and brake valve fitted in hydraulic system prevent the accidents caused by oil line overload and oil pipe ruptures.

The complete lighting systems and the safety devices such as load moment limiter ensure your safety during operation and are convenient for night work.

2 Specifications, complete vehicle

2.1 Product model

Model in engineering industry: ZTC800V5-1R

Product code: ZTC800V552-1R

2.2 Technical data

Item		Value	Remarks
Working performance	Max. rated lifting capacity kg	80000	
	Max. load moment of basic boom kN.m	2744	
	Max. load moment of max. length boom kN.m	1631	
	Max. lifting height of basic boom m	13.9	
	Max. lifting height of boom m	49.8	These parameters do not include deflection of boom and jib.
	Max. lifting height of jib m	66.1	
Working speeds	Max. hoist rope speed (main winch) m/min	130	Drum 4 th layer
	Max. hoist rope speed (auxiliary winch) m/min	130	Drum 2 nd layer
	Boom derricking up time s	55	
	Boom telescoping out time s	115	
	Slewing speed r/min	0-1.8	
Driving	Max. altitude m	2000	
	Max. driving speed km/h	50	
	Max. gradeability %	48	
	Min. turning diameter m	24	
	Min. ground clearance mm	304	
	Fuel consumption per hundred kilometers L	39	
Mass	Deadweight in driving condition kg	54000	
	Complete vehicle kerb mass kg	53870	
	Front axle load kg	23000	
	Rear axle load kg	31000	
Dimensions	Overall dimensions (L×W×H) mm	15000×2800×3870	
	Longitudinal distance between outriggers m	6.6	
	Transversal distance between outriggers m	Fully extended:8 Intermediately extended: 5.26	
	Tail slewing radius mm	4300	
	Boom length m	12.5-49	
	Boom angle °	-1-80	
	Jib length m	9.5, 16.0	
	Jib angle °	0, 15, 30	

2.3 Rated capacity chart

This crane is provided various rated capacity charts. The operator should select proper rated lifting load referring to resp. lifting capacity tables according to actual working conditions. For details, please refer to Table 2-1 to Table 2-14.

The values in column "I" refer to the extendable length of telescopic cylinder I.

The values in column "II" refer to 3 times extendable length of telescopic cylinder II, namely, the total extendable length of boom section 3, 4 and 5.

The working condition marked with asterisk (*) indicates over sides and rear working area:

1. When $60t < \text{rated load} \leq 70t$, a 70t hook should be used;
2. When $70t < \text{rated load} \leq 80t$, a 80t hook should be used, the reeving number is 13, and an additional device should be installed.

Table 2 Rated capacity chart

Unit: t

Radius (m)	Boom length (m)								
	TELESCOPIC CYLINDER I FULLY EXTENDED, outriggers fully extended, over side or rear working area, 13t counterweight								
	12.5	17.1	21.7	26.2	30.7	35.2	39.7	44.2	49.0
3.0	80.0*	65.0*							
3.5	72.0*	63.0*	42.0						
4.0	66.0*	61.0*	42.0						
4.5	60.0	60.5*	42.0	32.0					
5.0	56.0	54.0	42.0	32.0					
5.5	50.0	50.5	40.0	32.0	29.0				
6.0	46.0	45.5	39.0	32.0	29.0				
7.0	40.0	39.5	34.0	32.0	29.0	26.0			
8.0	34.5	34.0	29.5	29.0	27.0	26.0	21.0		
9.0	28.5	27.0	26.0	26.0	25.0	22.5	19.7	16.5	
10.0		22.0	22.0	22.5	23.0	20.8	18.2	16.0	12.4
11.0		18.9	18.6	19.6	20.3	19.0	17.0	15.0	12.2
12.0		15.9	15.6	16.6	17.3	17.6	15.8	14.2	12.0
14.0			11.4	12.4	13.0	13.5	13.5	12.5	11.5
16.0			8.5	9.4	10.0	10.5	10.9	11.0	10.4
18.0			6.3	7.2	7.8	8.3	8.6	8.9	9.2
20.0				5.6	6.2	6.7	7.0	7.3	7.6
22.0				4.3	4.9	5.4	5.7	6.0	6.3
24.0					3.9	4.4	4.7	5.0	5.2
26.0					3.0	3.5	3.8	4.1	4.3
28.0						2.8	3.1	3.4	3.6
30.0						2.2	2.5	2.8	3.0
32.0							2.0	2.3	2.5
34.0							1.5	1.8	2.0
36.0								1.4	1.6
38.0								1.0	1.2
40.0									
42.0									
44.0									
I (m)	0	4.6	9.2	9.2	9.2	9.2	9.2	9.2	9.2
II (m)	0	0	0	4.5	9.0	13.5	18.0	22.5	27.3
Reeving	12	10	7	5	5	4	4	3	3
Hook	60t								

Table 3 Rated capacity chart

Unit: t

Radius (m)	Boom length (m)							
	TELESCOPIC CYLINDER I INTERMEDIATELY EXTENDED, outriggers fully extended, over side or rear working area, 13t counterweight							
	12.5	17.1	21.6	26.1	30.6	35.1	39.6	44.4
3.0	80.0*	65.0*	32.0					
3.5	72.0*	63.0*	32.0					
4.0	66.0*	61.0*	32.0	30.0				
4.5	60.0	60.5*	32.0	30.0				
5.0	56.0	54.0	32.0	30.0	27.0			
5.5	50.0	50.5	32.0	30.0	27.0			
6.0	46.0	45.5	32.0	30.0	27.0			
7.0	40.0	39.5	32.0	30.0	27.0	22.0		
8.0	34.5	34.0	30.0	30.0	27.0	21.0	16.5	
9.0	28.5	27.0	27.0	27.0	27.0	20.0	16.5	13.5
10.0		22.0	23.5	24.0	24.0	19.0	16.0	13.0
11.0		18.9	20.1	20.9	21.5	17.5	15.0	12.5
12.0		15.9	17.1	17.9	18.4	16.5	14.0	12.0
14.0			12.8	13.5	14.0	14.4	12.3	11.0
16.0			9.8	10.5	11.0	11.4	11.0	9.7
18.0				8.4	8.8	9.2	9.5	8.7
20.0				6.7	7.1	7.5	7.8	7.8
22.0				5.4	5.8	6.2	6.5	6.7
24.0					4.7	5.1	5.4	5.6
26.0					3.9	4.3	4.6	4.8
28.0						3.5	3.8	4.0
30.0						2.9	3.2	3.4
32.0							2.7	2.9
34.0							2.2	2.4
36.0								2.0
38.0								1.6
40.0								
I (m)	0	4.6	4.6	4.6	4.6	4.6	4.6	4.6
II (m)	0	0	4.5	9.0	13.5	18.0	22.5	27.3
Reeving	12	10	5	5	5	4	3	3
Hook	60t							

Table 4 Rated capacity chart

Unit: t

Radius (m)	Boom length (m)						
	TELESCOPIC CYLINDER I FULLY EXTENDED, outriggers fully extended, over side or rear working area, 13t counterweight						
	12.5	17.0	21.5	26.0	30.5	35.0	39.8
3.0	80.0*	32.0	30.0				
3.5	72.0*	32.0	30.0				
4.0	66.0*	32.0	30.0	27.0			
4.5	60.0	32.0	30.0	27.0			
5.0	56.0	32.0	30.0	27.0	22.0		
5.5	50.0	32.0	30.0	27.0	22.0		
6.0	46.0	32.0	30.0	27.0	21.0		
7.0	40.0	32.0	30.0	27.0	20.0	16.5	
8.0	34.5	31.0	30.0	27.0	19.0	16.5	14.0
9.0	28.5	27.0	27.0	26.0	18.0	16.0	13.5
10.0		24.0	24.0	24.0	16.5	15.0	13.0
11.0		20.8	21.6	22.0	15.2	14.0	12.5
12.0		17.8	18.6	19.0	14.2	13.0	11.5
14.0			14.2	14.6	12.5	11.2	10.0
16.0			11.2	11.6	11.0	10.0	9.0
18.0				9.4	9.7	9.0	8.0
20.0				7.7	8.0	8.0	7.2
22.0					6.7	6.9	6.5
24.0					5.6	5.8	5.9
26.0					4.8	5.0	5.2
28.0						4.2	4.4
30.0						3.6	3.8
32.0							3.3
34.0							2.8
36.0							
I (m)	0	0	0	0	0	0	0
II (m)	0	4.5	9.0	13.5	18.0	22.5	27.3
Reeving	12	5	5	5	4	3	3
Hook	60t						

Table 5 Rated capacity chart

Unit: t

Radius (m)	Boom length (m)								
	TELESCOPIC CYLINDER I FULLY EXTENDED, outriggers fully extended, over side or rear working area, 8t counterweight								
	12.5	17.1	21.7	26.2	30.7	35.2	39.7	44.2	49.0
3.0	80.0*	65.0*							
3.5	70.0*	63.0*	42.0						
4.0	64.0*	61.0*	42.0						
4.5	58.0	57.0	42.0	32.0					
5.0	54.0	53.0	42.0	32.0					
5.5	50.0	49.5	40.0	32.0	29.0				
6.0	45.0	42.0	38.0	32.0	29.0				
7.0	36.0	36.0	32.0	32.0	29.0	26.0			
8.0	29.5	28.0	28.0	29.0	27.0	26.0	21.0		
9.0	23.5	23.0	22.8	24.0	25.0	22.5	19.7	16.5	
10.0		18.5	18.3	19.4	20.2	20.8	18.2	16.0	12.4
11.0		15.0	15.0	16.0	16.8	17.4	17.0	15.0	12.2
12.0		12.5	12.3	13.3	14.2	14.8	15.0	14.2	12.0
14.0			8.5	9.5	10.2	10.8	11.2	11.5	11.2
16.0			6.0	6.9	7.6	8.1	8.5	8.9	9.2
18.0				5.1	5.7	6.2	6.6	6.9	7.2
20.0				3.7	4.3	4.8	5.1	5.4	5.7
22.0					3.2	3.7	4.0	4.3	4.6
24.0					2.3	2.8	3.1	3.4	3.7
26.0						2.1	2.4	2.7	2.9
28.0						1.5	1.8	2.1	2.3
30.0							1.3	1.6	1.8
32.0							0.8	1.1	1.3
34.0									0.9
36.0									
38.0									
40.0									
42.0									
44.0									
I (m)	0	4.6	9.2	9.2	9.2	9.2	9.2	9.2	9.2
II (m)	0	0	0	4.5	9.0	13.5	18.0	22.5	27.3
Reeving	12	10	7	5	5	4	4	3	3
Hook	60t								

Table 6 Rated capacity chart

Unit: t

Radius (m)	Boom length (m)							
	TELESCOPIC CYLINDER I INTERMEDIATELY EXTENDED, outriggers fully extended, over side or rear working area, 8t counterweight							
	12.5	17.1	21.6	26.1	30.6	35.1	39.6	44.4
3.0	80.0*	65.0*	32.0					
3.5	70.0*	63.0*	32.0					
4.0	64.0*	61.0*	32.0	30.0				
4.5	58.0	57.0	32.0	30.0				
5.0	54.0	53.0	32.0	30.0	27.0			
5.5	50.0	49.5	32.0	30.0	27.0			
6.0	45.0	42.0	32.0	30.0	27.0			
7.0	36.0	36.0	32.0	30.0	27.0	22.0		
8.0	29.5	28.0	29.0	29.0	27.0	21.0	16.5	
9.0	23.5	23.0	24.5	25.4	26.1	20.0	16.5	13.5
10.0		18.5	19.9	20.7	21.4	19.0	16.0	13.0
11.0		15.0	16.5	17.3	17.9	17.5	15.0	12.5
12.0		12.5	13.8	14.7	15.2	15.7	14.0	12.0
14.0			10.0	10.7	11.2	11.7	12.0	11.0
16.0			7.2	8.1	8.6	9.0	9.3	9.4
18.0				6.2	6.7	7.1	7.3	7.6
20.0				4.8	5.3	5.6	5.9	6.1
22.0					4.1	4.5	4.7	5.0
24.0					3.2	3.6	3.8	4.1
26.0						2.8	3.1	3.3
28.0						2.2	2.4	2.7
30.0							1.9	2.1
32.0							1.5	1.7
34.0								1.3
36.0								0.9
38.0								
40.0								
I (m)	0	4.6	4.6	4.6	4.6	4.6	4.6	4.6
II (m)	0	0	4.5	9.0	13.5	18.0	22.5	27.3
Reeving	12	10	5	5	5	4	3	3
Hook	60t							

Table 7 Rated capacity chart

Unit: t

Radius (m)	Boom length (m)						
	TELESCOPIC CYLINDER I FULLY EXTENDED, outriggers fully extended, over side or rear working area, 8t counterweight						
	12.5	17.0	21.5	26.0	30.5	35.0	39.8
3.0	80.0*	32.0	30.0				
3.5	70.0*	32.0	30.0				
4.0	64.0*	32.0	30.0	27.0			
4.5	58.0	32.0	30.0	27.0			
5.0	54.0	32.0	30.0	27.0	22.0		
5.5	50.0	32.0	30.0	27.0	22.0		
6.0	45.0	32.0	30.0	27.0	21.0		
7.0	36.0	32.0	30.0	27.0	20.0	16.5	
8.0	29.5	30.0	33.2	27.0	19.0	16.5	14.0
9.0	23.5	25.4	26.2	26.0	18.0	16.0	13.5
10.0		20.7	21.6	22.1	16.5	15.0	13.0
11.0		17.3	18.1	18.6	15.2	14.0	12.5
12.0		14.5	15.4	15.9	14.2	13.0	11.5
14.0			11.4	11.9	12.3	11.2	10.0
16.0			8.8	9.2	9.6	9.8	9.0
18.0				7.3	7.7	7.8	8.0
20.0				5.8	6.2	6.4	6.6
22.0					5.0	5.2	5.4
24.0					4.1	4.3	4.5
26.0						3.6	3.8
28.0						3.0	3.1
30.0							2.6
32.0							2.1
34.0							
36.0							
I (m)	0	0	0	0	0	0	0
II (m)	0	4.5	9.0	13.5	18.0	22.5	27.3
Reeving	12	5	5	5	4	3	3
Hook	60t						

Table 8 Rated capacity chart

Unit: t

Radius (m)	Boom length (m)								
	TELESCOPIC CYLINDER I FULLY EXTENDED, outriggers fully extended, over side or rear working area, 4t counterweight								
	12.5	17.1	21.7	26.2	30.7	35.2	39.7	44.2	49.0
3.0	80.0*	65.0*							
3.5	70.0*	63.0*	42.0						
4.0	64.0*	61.0*	42.0						
4.5	58.0	57.0	42.0	32.0					
5.0	54.0	53.0	42.0	32.0					
5.5	41.0	39.0	40.0	32.0	29.0				
6.0	35.0	35.0	36.0	32.0	29.0				
7.0	29.0	29.0	29.3	32.0	29.0	25.0			
8.0	25.4	25.0	24.4	26.0	26.8	25.0	21.0		
9.0	20.1	19.5	19.0	20.0	21.0	21.6	19.7	16.5	
10.0		15.2	14.8	15.9	16.9	17.4	17.9	16.0	12.4
11.0		12.1	11.8	12.8	13.6	14.1	14.6	15.0	12.2
12.0		9.7	9.5	10.5	11.2	11.7	12.2	12.7	12.0
14.0		6.5	6.2	7.2	7.9	8.4	9.0	9.2	9.4
16.0			4.0	5.1	5.8	6.2	6.7	7.0	7.3
18.0			2.5	3.5	4.1	4.6	5.0	5.3	5.6
20.0				2.3	2.9	3.4	3.8	4.1	4.3
22.0				1.4	2.0	2.4	2.8	3.1	3.4
24.0					1.3	1.7	2.0	2.3	2.6
26.0						1.1	1.4	1.6	1.9
28.0							0.9	1.1	1.4
30.0									0.9
32.0									
34.0									
36.0									
38.0									
40.0									
42.0									
44.0									
I (m)	0	4.6	9.2	9.2	9.2	9.2	9.2	9.2	9.2
II (m)	0	0	0	4.5	9.0	13.5	18.0	22.5	27.3
Reeving	12	10	7	5	5	4	4	3	3
Hook	60t								

Table 9 Rated capacity chart

Unit: t

Radius (m)	Boom length (m)							
	TELESCOPIC CYLINDER I INTERMEDIATELY EXTENDED, outriggers fully extended, over side or rear working area, 4t counterweight							
	12.5	17.1	21.6	26.1	30.6	35.1	39.6	44.4
3.0	80.0*	65.0*	32.0					
3.5	70.0*	63.0*	32.0					
4.0	64.0*	61.0*	32.0	30.0				
4.5	58.0	57.0	32.0	30.0				
5.0	54.0	53.0	32.0	30.0	27.0			
5.5	41.0	39.0	32.0	30.0	27.0			
6.0	35.0	35.0	32.0	30.0	27.0			
7.0	29.0	29.0	30.0	29.0	27.0	22.0		
8.0	25.4	25.0	26.4	27.4	26.5	21.0	16.5	
9.0	20.1	19.5	20.5	21.5	22.0	20.0	16.5	13.5
10.0		15.2	16.2	17.3	17.8	18.7	16.0	13.0
11.0		12.1	13.1	14.1	14.6	15.1	15.0	12.5
12.0		9.7	10.8	11.8	12.3	12.7	13.0	12.0
14.0		6.5	7.6	8.5	9.0	9.4	9.8	10.0
16.0			5.5	6.2	6.8	7.1	7.4	7.7
18.0			3.9	4.6	5.1	5.4	5.7	6.0
20.0				3.4	3.8	4.1	4.5	4.7
22.0				2.4	3.0	3.2	3.5	3.7
24.0					2.2	2.4	2.7	2.9
26.0					1.5	1.8	2.0	2.3
28.0						1.3	1.5	1.8
30.0							1.1	1.3
32.0								0.9
34.0								
36.0								
38.0								
40.0								
I (m)	0	4.6	4.6	4.6	4.6	4.6	4.6	4.6
II (m)	0	0	4.5	9.0	13.5	18.0	22.5	27.3
Reeving	12	10	5	5	5	4	3	3
Hook	60t							

Table 10 Rated capacity chart

Unit: t

Radius (m)	Boom length (m)						
	TELESCOPIC CYLINDER I FULLY EXTENDED, outriggers fully extended, over side or rear working area, 4t counterweight						
	12.5	17.0	21.5	26.0	30.5	35.0	39.8
3.0	80.0*	32.0	30.0				
3.5	70.0*	32.0	30.0				
4.0	64.0*	32.0	30.0	27.0			
4.5	58.0	32.0	30.0	27.0			
5.0	54.0	32.0	30.0	27.0	22.0		
5.5	41.0	32.0	30.0	27.0	22.0		
6.0	35.0	32.0	30.0	27.0	21.0		
7.0	29.0	29.0	30.0	27.0	20.0	16.5	
8.0	25.4	26.9	28.0	27.0	19.0	16.5	14.0
9.0	20.1	21.5	22.3	23.0	18.0	16.0	13.5
10.0		17.5	18.2	18.8	16.5	15.0	13.0
11.0		14.3	14.9	15.5	15.2	14.0	12.5
12.0		11.8	12.5	13.0	13.6	13.0	11.5
14.0			9.1	9.6	10.1	10.2	10.0
16.0			6.9	7.4	7.7	7.9	8.0
18.0			5.3	5.7	6.0	6.3	6.5
20.0				4.5	4.8	5.0	5.2
22.0				3.5	3.8	4.0	4.2
24.0					3.0	3.2	3.3
26.0					2.4	2.6	2.7
28.0						2.0	2.2
30.0						1.6	1.8
32.0							1.3
34.0							1.0
36.0							
I (m)	0	0	0	0	0	0	0
II (m)	0	4.5	9.0	13.5	18.0	22.5	27.3
Reeving	12	5	5	5	4	3	3
Hook	60t						

Table 11 Rated capacity chart

Unit: t

Radius (m)	Boom length (m)								
	TELESCOPIC CYLINDER I FULLY EXTENDED, outriggers intermediately extended, over side or rear working area, 13t counterweight								
	12.5	17.1	21.7	26.2	30.7	35.2	39.7	44.2	49.0
3.0	72.0*	62.0*							
3.5	65.0*	58.0	42.0						
4.0	58.5	55.0	42.0						
4.5	53.0	50.0	42.0	32.0					
5.0	48.0	45.0	42.0	32.0					
5.5	41.0	40.0	38.0	32.0	29.0				
6.0	34.0	33.0	32.5	32.0	29.0				
7.0	25.0	24.0	24.0	25.0	25.0	25.0			
8.0	19.3	18.5	18.0	19.2	20.0	20.7	20.5		
9.0	15.4	14.8	14.4	15.5	16.2	16.8	17.3	16.5	
10.0		11.9	11.5	12.6	13.3	13.8	14.3	14.6	12.4
11.0		9.7	9.4	10.4	11.1	11.6	12.0	12.3	12.2
12.0		8.0	7.7	8.6	9.3	9.8	10.2	10.5	10.8
14.0		5.5	5.2	6.1	6.7	7.2	7.6	7.9	8.1
16.0			3.4	4.3	4.9	5.3	5.7	6.0	6.2
18.0			2.1	3.0	3.6	4.0	4.3	4.6	4.8
20.0				1.9	2.5	2.9	3.2	3.5	3.7
22.0				1.1	1.7	2.1	2.4	2.7	2.9
24.0					1.0	1.4	1.8	2.1	2.3
26.0						0.9	1.2	1.4	1.6
28.0								1.0	1.2
30.0									
32.0									
34.0									
36.0									
38.0									
40.0									
42.0									
44.0									
I (m)	0	4.6	9.2	9.2	9.2	9.2	9.2	9.2	9.2
II (m)	0	0	0	4.5	9.0	13.5	18.0	22.5	27.3
Reeving	12	10	7	5	5	4	4	3	3
Hook	60t								

Table 12 Rated capacity chart

Unit: t

Radius (m)	Boom length (m)							
	TELESCOPIC CYLINDER I INTERMEDIATELY EXTENDED, outriggers intermediately extended, over side or rear working area, 13t counterweight							
	12.5	17.1	21.6	26.1	30.6	35.1	39.6	44.4
3.0	72.0*	62.0*	32.0					
3.5	65.0*	58.0	32.0					
4.0	58.5	55.0	32.0	30.0				
4.5	53.0	50.0	32.0	30.0				
5.0	48.0	45.0	32.0	30.0	27.0			
5.5	41.0	40.0	32.0	30.0	27.0			
6.0	34.0	33.0	32.0	30.0	27.0			
7.0	25.0	24.0	25.0	26.0	26.0	22.0		
8.0	19.3	18.5	19.5	20.5	21.0	21.0	16.5	
9.0	15.4	14.8	15.5	16.5	17.0	17.5	16.5	13.5
10.0		11.9	12.7	13.5	14.0	14.6	15.0	13.0
11.0		9.7	10.8	11.5	12.0	12.4	12.8	12.5
12.0		8.0	9.0	9.7	10.2	10.6	11.0	11.0
14.0		5.5	6.4	7.1	7.6	8.0	8.3	8.4
16.0			4.6	5.3	5.7	6.1	6.4	6.6
18.0			3.3	4.0	4.4	4.7	5.0	5.2
20.0				2.9	3.3	3.6	3.9	4.1
22.0				2.1	2.5	2.8	3.1	3.3
24.0					1.8	2.1	2.4	2.6
26.0					1.2	1.5	1.8	2.0
28.0						1.0	1.3	1.5
30.0							0.9	1.1
32.0								0.8
34.0								
36.0								
38.0								
40.0								
I (m)	0	4.6	4.6	4.6	4.6	4.6	4.6	4.6
II (m)	0	0	4.5	9.0	13.5	18.0	22.5	27.3
Reeving	12	10	5	5	5	4	3	3
Hook	60t							

Table 13 Rated capacity chart

Unit: t

Radius (m)	Boom length (m)						
	TELESCOPIC CYLINDER I FULLY EXTENDED, outriggers intermediately extended, over side or rear working area, 13t counterweight						
	12.5	17.0	21.5	26.0	30.5	35.0	39.8
3.0	72.0*	32.0	30.0				
3.5	65.0*	32.0	30.0				
4.0	58.5	32.0	30.0	27.0			
4.5	53.0	32.0	30.0	27.0			
5.0	48.0	32.0	30.0	27.0	22.0		
5.5	41.0	32.0	30.0	27.0	22.0		
6.0	34.0	32.0	30.0	27.0	21.0		
7.0	25.0	26.0	27.0	27.0	20.0	16.5	
8.0	19.3	20.0	21.0	21.5	19.0	16.5	14.0
9.0	15.4	16.0	17.0	17.5	17.7	16.0	13.5
10.0		13.5	14.5	15.0	14.7	15.0	13.0
11.0		11.2	12.2	12.6	12.7	13.0	12.5
12.0		9.5	10.4	10.8	11.1	11.4	11.3
14.0			7.8	8.2	8.5	8.8	8.8
16.0			5.9	6.3	6.6	6.9	7.0
18.0			4.5	4.9	5.2	5.5	5.7
20.0				3.9	4.2	4.4	4.6
22.0				3.0	3.4	3.6	3.7
24.0					2.7	2.9	3.0
26.0					2.1	2.3	2.4
28.0						1.8	1.9
30.0						1.4	1.5
32.0							1.2
34.0							0.9
36.0							
I (m)	0	0	0	0	0	0	0
II (m)	0	4.5	9.0	13.5	18.0	22.5	27.3
Reeving	12	5	5	5	4	3	3
Hook	60t						

Table 14 Rated capacity chart

Unit: t

Radius (m)	Boom length (m)								
	TELESCOPIC CYLINDER I FULLY EXTENDED, outriggers intermediately extended, over side or rear working area, 8t counterweight								
	12.5	17.1	21.7	26.2	30.7	35.2	39.7	44.2	49.0
3.0	70.0*	55.0							
3.5	60.0	55.0	42.0						
4.0	50.0	48.0	42.0						
4.5	45.0	42.0	42.0	32.0					
5.0	40.0	38.0	36.5	31.0					
5.5	33.0	32.0	30.5	30.0	29.0				
6.0	27.0	26.5	26.0	26.5	26.7				
7.0	19.5	19.0	18.9	20.0	20.2	20.5			
8.0	15.0	14.4	14.1	15.1	15.8	16.5	16.6		
9.0	11.5	11.2	10.9	11.8	12.6	13.2	13.6	13.7	
10.0		8.8	8.5	9.4	10.2	10.7	11.1	11.4	11.5
11.0		7.0	6.7	7.6	8.3	8.8	9.2	9.6	9.7
12.0		5.5	5.3	6.1	6.8	7.3	7.7	8.0	8.2
14.0		3.4	3.2	4.0	4.7	5.1	5.5	5.8	6.1
16.0			1.7	2.5	3.2	3.6	3.9	4.2	4.5
18.0				1.4	2.1	2.4	2.8	3.0	3.3
20.0					1.2	1.6	1.9	2.1	2.4
22.0						0.9	1.2	1.4	1.7
24.0								0.9	1.1
26.0									
28.0									
30.0									
32.0									
34.0									
36.0									
38.0									
40.0									
42.0									
44.0									
I (m)	0	4.6	9.2	9.2	9.2	9.2	9.2	9.2	9.2
II (m)	0	0	0	4.5	9.0	13.5	18.0	22.5	27.3
Reeving	11	9	7	5	5	4	3	3	3
Hook	60t								

Table 15 Rated capacity chart

Unit: t

Radius (m)	Boom length (m)							
	TELESCOPIC CYLINDER I INTERMEDIATELY EXTENDED, outriggers intermediately extended, over side or rear working area, 8t counterweight							
	12.5	17.1	21.6	26.1	30.6	35.1	39.6	44.4
3.0	70.0*	55.0	32.0					
3.5	60.0	55.0	32.0					
4.0	50.0	48.0	32.0	30.0				
4.5	45.0	42.0	32.0	30.0				
5.0	40.0	38.0	32.0	30.0				
5.5	33.0	32.0	32.0	30.0	27.0			
6.0	27.0	26.5	27.5	27.7	27.0			
7.0	19.5	19.0	20.0	21.0	21.5	21.5		
8.0	15.0	14.4	15.5	16.4	17.0	17.4	16.5	
9.0	11.5	11.2	12.2	13.0	13.6	14.0	14.3	12.8
10.0		8.8	9.8	10.6	11.1	11.5	11.9	12.1
11.0		7.0	8.0	8.7	9.2	9.6	10.0	10.2
12.0		5.5	6.6	7.3	7.7	8.1	8.4	8.7
14.0		3.4	4.4	5.1	5.5	5.9	6.2	6.4
16.0			2.9	3.6	4.0	4.3	4.6	4.8
18.0			1.9	2.6	2.9	3.2	3.4	3.6
20.0				1.6	2.0	2.3	2.5	2.7
22.0				0.9	1.3	1.6	1.8	2.0
24.0						1.1	1.3	1.5
26.0							0.8	1.0
28.0								
30.0								
32.0								
34.0								
36.0								
38.0								
40.0								
I (m)	0	4.6	4.6	4.6	4.6	4.6	4.6	4.6
II (m)	0	0	4.5	9.0	13.5	18.0	22.5	27.3
Reeving	11	9	5	5	5	4	3	3
Hook	60t							

Table 16 Rated capacity chart

Unit: t

Radius (m)	Boom length (m)						
	TELESCOPIC CYLINDER I FULLY EXTENDED, outriggers intermediately extended, over side or rear working area, 8t counterweight						
	12.5	17.0	21.5	26.0	30.5	35.0	39.8
3.0	70.0*	32.0	30.0				
3.5	60.0	32.0	30.0				
4.0	50.0	32.0	30.0	27.0			
4.5	45.0	32.0	30.0	27.0			
5.0	40.0	32.0	30.0	27.0	22.0		
5.5	33.0	32.0	30.0	27.0	22.0		
6.0	27.0	29.0	29.5	27.0	21.0		
7.0	19.5	21.0	22.0	22.5	20.0	16.5	
8.0	15.0	16.4	17.3	17.8	18.1	16.5	14.0
9.0	11.5	13.1	13.9	14.3	14.8	15.0	13.5
10.0		10.7	11.4	11.8	12.2	12.4	12.5
11.0		8.7	9.4	9.9	10.2	10.5	10.8
12.0		7.3	8.0	8.4	8.7	9.0	9.2
14.0			5.7	6.2	6.5	6.7	6.9
16.0			4.2	4.6	4.9	5.1	5.3
18.0			3.0	3.4	3.7	3.9	4.1
20.0				2.5	2.8	3.0	3.2
22.0				1.8	2.1	2.3	2.5
24.0					1.5	1.7	1.9
26.0					1.0	1.2	1.4
28.0						0.8	1.0
30.0							
32.0							
34.0							
I (m)	0	0	0	0	0	0	0
II (m)	0	4.5	9.0	13.5	18.0	22.5	27.3
Reeving	11	5	5	5	4	3	3
Hook	60t						

Table 17 Rated capacity chart

Unit: t

Radius (m)	Boom length (m)								
	TELESCOPIC CYLINDER I FULLY EXTENDED, outriggers intermediately extended, over side or rear working area, 4t counterweight								
	12.5	17.1	21.7	26.2	30.7	35.2	39.7	44.2	49.0
3.0	65.0*	55.0							
3.5	55.0	50.0	42.0						
4.0	48.0	46.0	40.0						
4.5	42.0	39.0	37.0	32.0					
5.0	33.0	31.0	29.0	30.0					
5.5	26.5	25.0	24.0	25.0	25.0				
6.0	22.0	20.5	20.0	21.0	21.5				
7.0	15.5	15.0	14.5	15.5	16.0	16.5			
8.0	11.5	11.0	10.5	11.5	12.5	13.1	13.2		
9.0	9.0	8.4	8.1	9.0	9.8	10.3	10.7	11.0	
10.0		6.3	6.1	7.0	7.7	8.2	8.7	9.0	9.2
11.0		4.8	4.5	5.5	6.1	6.6	7.0	7.4	7.6
12.0		3.6	3.3	4.2	4.9	5.4	5.8	6.1	6.4
14.0		1.8	1.6	2.4	3.0	3.5	3.9	4.2	4.4
16.0				1.2	1.8	2.2	2.5	2.8	3.1
18.0					0.8	1.2	1.6	1.8	2.1
20.0							0.8	1.1	1.3
22.0									
24.0									
26.0									
28.0									
30.0									
32.0									
34.0									
36.0									
38.0									
40.0									
42.0									
44.0									
I (m)	0	4.6	9.2	9.2	9.2	9.2	9.2	9.2	9.2
II (m)	0	0	0	4.5	9.0	13.5	18.0	22.5	27.3
Reeving	10	9	7	5	4	3	3	3	3
Hook	60t								

Table 18 Rated capacity chart

Unit: t

Radius (m)	Boom length (m)							
	TELESCOPIC CYLINDER I INTERMEDIATELY EXTENDED, outriggers intermediately extended, over side or rear working area, 4t counterweight							
	12.5	17.1	21.6	26.1	30.6	35.1	39.6	44.4
3.0	65.0 *	55.0	32.0					
3.5	55.0	50.0	32.0					
4.0	48.0	46.0	32.0	30.0				
4.5	42.0	39.0	32.0	30.0				
5.0	33.0	31.0	32.0	30.0	27.0			
5.5	26.5	25.0	26.5	26.5	26.5			
6.0	22.0	20.5	22.5	22.8	22.8			
7.0	15.5	15.0	16.0	17.0	17.5	17.5		
8.0	11.5	11.0	12.0	13.0	13.6	14.1	14.1	
9.0	9.0	8.4	9.5	10.3	10.8	11.3	11.6	11.6
10.0		6.3	7.5	8.2	8.7	9.1	9.5	9.7
11.0		4.8	5.9	6.6	7.1	7.5	7.8	8.1
12.0		3.6	4.7	5.3	5.8	6.2	6.5	6.8
14.0		1.8	2.9	3.5	3.9	4.3	4.6	4.8
16.0			1.6	2.2	2.6	3.0	3.2	3.4
18.0				1.2	1.7	2.0	2.2	2.4
20.0					0.9	1.2	1.5	1.7
22.0							0.9	1.1
24.0								
26.0								
28.0								
30.0								
32.0								
34.0								
36.0								
38.0								
40.0								
I (m)	0	4.6	4.6	4.6	4.6	4.6	4.6	4.6
II (m)	0	0	4.5	9.0	13.5	18.0	22.5	27.3
Reeving	10	9	5	5	5	3	3	3
Hook	60t							

a)

Table 19 Rated capacity chart

Unit: t

Radius (m)	Boom length (m)						
	TELESCOPIC CYLINDER I FULLY EXTENDED, outriggers intermediately extended, over side or rear working area, 4t counterweight						
	12.5	17.0	21.5	26.0	30.5	35.0	39.8
3.0	65.0*	32.0	30.0				
3.5	55.0	32.0	30.0				
4.0	48.0	32.0	30.0	27.0			
4.5	42.0	32.0	30.0	27.0			
5.0	33.0	32.0	30.0	27.0	22.0		
5.5	26.5	28.5	28.5	27.0	22.0		
6.0	22.0	23.5	24.5	24.5	21.0		
7.0	15.5	17.0	18.0	18.5	18.5	16.0	
8.0	11.5	13.0	14.0	14.5	15.0	15.0	14.0
9.0	9.0	10.2	11.0	11.6	12.0	12.2	12.2
10.0		8.2	8.9	9.4	9.8	10.0	10.2
11.0		6.6	7.3	7.8	8.1	8.4	8.5
12.0		5.4	6.0	6.5	6.8	7.0	7.2
14.0			4.1	4.6	4.9	5.1	5.3
16.0			2.8	3.2	3.5	3.7	3.9
18.0			1.8	2.2	2.5	2.7	2.9
20.0				1.5	1.7	1.9	2.1
22.0				0.9	1.1	1.3	1.5
24.0						0.8	1.0
26.0							
28.0							
30.0							
32.0							
34.0							
I (m)	0	0	0	0	0	0	0
II (m)	0	4.5	9.0	13.5	18.0	22.5	27.3
Reeving	10	5	5	5	4	3	3
Hook	60t						

b)

Table 20 Rated capacity chart

Unit: t

Boom angle (°)	Boom (m) + jib (m), outriggers fully extended, 13t counterweight					
	49.0+9.5			49.0+16.0		
	0°	15°	30°	0°	15°	30°
80	5.0	3.3	2.5	3.0	2.0	1.5
78	5.0	3.3	2.5	3.0	2.0	1.45
76	4.8	3.2	2.5	2.9	1.9	1.4
74	4.5	3.1	2.5	2.7	1.8	1.35
72	4.2	3.0	2.5	2.5	1.7	1.3
70	3.9	2.9	2.4	2.3	1.65	1.25
68	3.6	2.8	2.3	2.1	1.6	1.25
66	3.4	2.7	2.2	2.0	1.55	1.2
64	3.2	2.6	2.1	1.9	1.5	1.2
62	3.0	2.5	2.05	1.8	1.45	1.15
60	2.7	2.4	2.0	1.7	1.4	1.15
58	2.3	2.2	1.95	1.6	1.35	1.1
56	2.0	1.9	1.8	1.55	1.3	1.1
54	1.7	1.6	1.5	1.4	1.25	1.05
52	1.5	1.4	1.3	1.2	1.1	1.0
50	1.2	1.15	1.1	1.0	0.95	0.9
48	1.0	0.95	0.9	0.85	0.8	0.75
46	0.85	0.8	0.75	0.7	0.65	0.6
44						
42						
40						
Reeving	1					
Hook	8t					

Table 21 Rated capacity chart

Unit: t

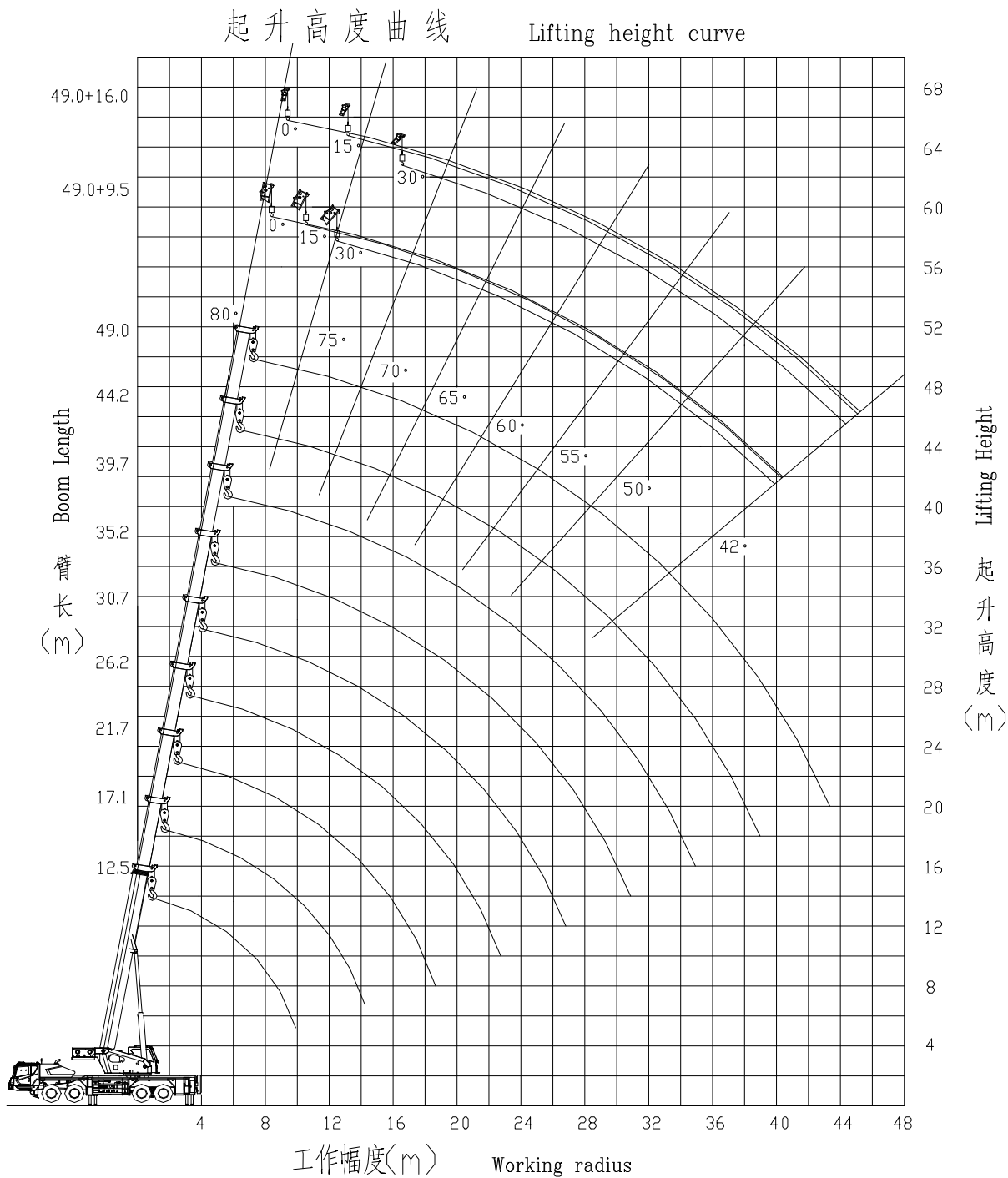
Boom angle (°)	Boom (m) + jib (m), outriggers fully extended, 8t counterweight					
	49.0+9.5			49.0+16.0		
	0°	15°	30°	0°	15°	30°
80	5.0	3.3	2.5	3.0	2.0	1.5
78	5.0	3.3	2.5	3.0	2.0	1.45
76	4.8	3.2	2.5	2.9	1.9	1.4
74	4.5	3.1	2.5	2.7	1.8	1.35
72	4.2	3.0	2.5	2.5	1.7	1.3
70	3.7	2.9	2.4	2.3	1.65	1.25
68	3.4	2.6	2.2	2.1	1.6	1.25
66	3.1	2.4	2.1	2.0	1.55	1.2
64	2.7	2.3	1.9	1.9	1.5	1.2
62	2.2	2.0	1.8	1.75	1.45	1.15
60	1.8	1.75	1.7	1.55	1.3	1.1
58	1.5	1.45	1.4	1.25	1.1	1.0
56	1.2	1.15	1.1	1.0	0.95	0.85
54	0.9	0.85	0.8	0.8	0.75	0.65
52	0.7					
50						
48						
46						
44						
42						
40						
Reeving	1					
Hook	8t					

Table 22 Rated capacity chart

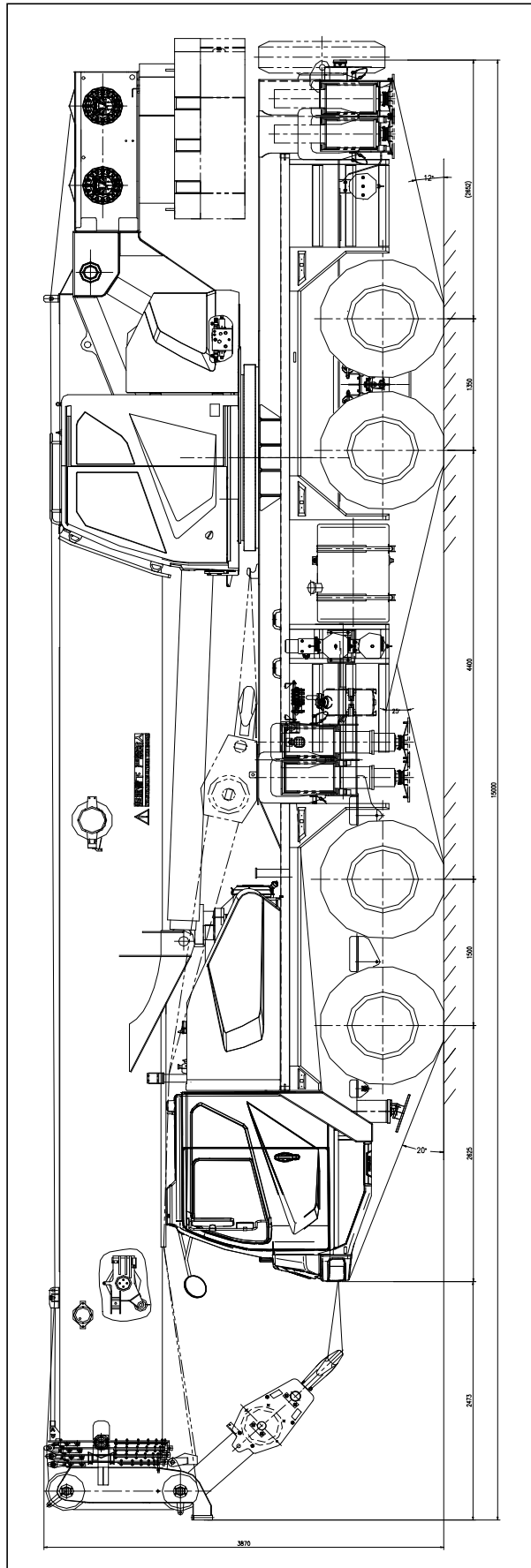
Unit: t

Boom angle (°)	Boom (m) + jib (m), outriggers fully extended, 4t counterweight					
	49.0+9.5			49.0+16.0		
	0°	15°	30°	0°	15°	30°
80	5.0	3.3	2.5	3.0	2.0	1.5
78	5.0	3.3	2.5	3.0	2.0	1.45
76	4.8	3.2	2.5	2.9	1.9	1.4
74	4.4	3.1	2.5	2.7	1.8	1.35
72	3.9	2.9	2.45	2.5	1.7	1.3
70	3.7	2.7	2.2	2.3	1.65	1.25
68	3.0	2.5	2.1	2.1	1.6	1.25
66	2.4	2.2	2.0	1.55	1.55	1.2
64	1.9	1.7	1.6	1.6	1.4	1.05
62	1.5	1.35	1.25	1.25	1.1	1.0
60	1.1	1.0	0.95	0.95	0.8	0.8
58	0.8	0.8	0.7	0.7		
56						
54						
52						
50						
48						
46						
44						
42						
40						
Reeving	1					
Hook	8t					

2.4 Lifting height chart



2.5 Overall view (Unit: Metric mm)



3 Components, superstructure

3.1 Boom and telescoping mechanism

The box-shaped boom consists of 5 U-type boom sections made of low-alloy and high-strength steel plate, providing the boom with excellent bending-resistance capacity, super load bearing capacity, light deadweight, large lateral stiffness and small end deflection. The boom head adopts new plate-type structure, realizing larger lapping ratio between boom sections, and matching with embedded sliding blocks. A series of optimized design have the deadweight of the boom greatly decreased and the stress on the boom evenly distributed to avoid partial distortion. Furthermore, the boom has good guidance quality and adjustability. .

The telescopic boom sections are telescoped in / out via two telescopic cylinders and two sets of boom extension / retraction rope. The telescopic cylinder I drives the telescopic boom section 1 to telescope in / out; the telescopic cylinder II drives telescopic boom sections 2, 3, and 4 to telescope in / out simultaneously together with the boom extension / retraction rope. This compact design makes the crane work reliably. Each cylinder is fitted with a balance valve.

3.2 Jib

It consists of one adpter and two jib sections. They are folded on the side of boom when not used and can be installed and removed by inserted pins.

The two jib sections are of a reducing and lattice structure.

Jib section 1 is articulated on the head of top boom section with pins and can be assembled below an angle of 0°, 15° or 30° to the telescopic boom according to your needs. The angle can be conveniently changed via the pins and pull bracket.

Jib length:

Jib section 1: 9.5 m

Jib section 1 + jib section 2: 16 m

3.3 Slewing platform

Single ribbed plate structured and optimized slewing platform made from high-strength steel plate makes the layout of articulated points of boom and derricking mechanism more reasonable. It also has a novel style and beautiful figure.

The engine hood is of a human-based layout.

3.4 Rooster sheave

It is secured at the outside of the boom head when it is not used. It can be rotated around the shaft and pinned onto the boom head when it is used.

This option is set up for rapid hoists over the boom head to improve the working efficiency when the loads are light.

3.5 Derricking mechanism

1 front-mounted hydraulic cylinder with safety balance valve provides the boom with smooth derricking movements from -1° to 80°.

3.6 Slewing mechanism

Via the planetary gear reducer, the axial plunger hydraulic motor drives the pinion gear on the output shaft to rotate the exterior toothed ring of slewing ring fixed on chassis frame, providing superstructure with 360° unlimited slewing.

The slewing mechanism is of controllable aligning function, which can make the load be aligned automatically during operation. Slewing cushion valve and normally-closed brake can ensure stable and reliable slewing operation of the crane. 4-point contact ball-type slewing ring ensures the slewing platform with super-strong load bearing capability and long service life.

3.7 Hoist mechanism

It consists of main and auxiliary hoist mechanisms.

The two hoist mechanisms are driven by hydraulic variable motor with built-in planetary gear reducer to lift or lower the hook. A brake is fitted between the motor and reducer.

The two winch mechanisms can be controlled independently and also can carry out simultaneous movements.

Models of main and auxiliary winch reducers are the same.

Main and auxiliary winch adopt variable pumps.

The lowering limit switch is fitted on the main winch.

The built-in planetary reducer is of compact structure, light deadweight and high reliability.

Specifications for high-tensile torsion resistant hoist rope:

Diameter: $\phi 20.0$ mm

Strength grade: 1870 N/mm²

Length of main hoist rope: 230 m

Length of auxiliary hoist rope: 140 m

3.8 Main and auxiliary hooks

Main hook: 60 t, with 6 pulleys, installed with a mounting lug at the end of the wire rope and an anti-slipping and anti-rotation hook latch

Auxiliary hook (1 reeving): 8 t, installed with an anti-twist and anti-slipping hook latch

3.9 Operator's cab

It is of steel-structure welded with right-mounted instrument console and adjustable seat with headrest. It is equipped with two joysticks, windshield wiper, washing system, air conditioning and heater. The arrangement provides spacious operating space, reasonable arrangement, human-based design, convenient and safe operation.

3.10 Outriggers

H-type outriggers, which are in box-shaped structure and welded of low-alloy and high-strength steel plate, are of good sectional performance and strong load bearing capability via finite element analysis and simulated design. The cab tilting mechanism can tilt the cab up and down by max. 20 degrees.

2-section horizontal outrigger beam can be extended and retracted with a horizontal cylinder and a set of outrigger extension / retraction rope. Large outrigger span ensures stability of the crane.

After the outriggers are fully extended or retracted, the outrigger pads can be locked with retaining pins.

Manual outrigger control levers are fitted on both sides of the vehicle for controlling the outriggers to extend or retract simultaneously or independently. Each vertical cylinder is equipped with a two-way hydraulic lock to ensure stable and reliable operation of the crane.

In addition, the crane also can work with outriggers intermediately extended for narrow area operation.

3.11 Hydraulic system

The open-type hydraulic system adopts advanced pilot-operated proportional joysticks, hydraulic proportional control system and anti-pollution bite-type fitting to ensure the high reliability of the system. The main power element is the variable pump and dual gear pumps. Among them, the variable pump supplies hydraulic oil for main winch, auxiliary winch, derricking mechanism and telescoping mechanism; the front gear pump supplies hydraulic oil for chassis hydraulic system, slewing mechanism, while the rear gear pump supplies oil to the air conditioning system and counterweight lifting system.

The outrigger control valves are new-type manual multiple directional control valves to control the horizontal and vertical cylinders' movements. Each of them is fitted with a pressure limiting valve, thus, can prevent the piston rods of horizontal cylinders from bending. The 5th outrigger cylinder and vertical cylinder can be also controlled to retract simultaneously, so damage of the 5th outrigger cylinder can be avoided.

A counterweight handler is installed to ensure sound starting and braking performance and high reliability. A cab tilting mechanism is also installed.

3.12 Electrical system

Double-wire system, 24 Volt DC.

The electrical system consists of superstructure electrical system and chassis electrical system.

The electrical system of superstructure includes the devices such as warning light "Main / auxiliary winch approaching upper limit", warning light "Main / auxiliary winch approaching lower limit", hoisting limit switch, lowering limit switch, overload protection device, emergency off switch etc., ensuring safe operation and providing good working environment.

The electrical system of chassis includes the USB / SD / MP3 player, air conditioning and heater etc, ensuring the safety driving performance and providing comfortable driving environment.

3.13 Safety devices

This crane is equipped with an automatic load moment limiter whose display and warning devices are all fitted in operator's cab.

If the actual load reaches 90% of the rated one, the warning light lights up and the buzzer sends out slow acoustic warning.

If the actual load approaches 100% of the rated one, the warning light lights up, the buzzer sends out fast acoustic warning and all dangerous movements are switched off.

The basic parameters, such as moment ratio, boom angle, boom length, working radius, actual lifting capacity, maximum permissible lifting capacity and actual lifting height will be displayed on the digital LCD.

This crane is also equipped with the following safety devices to ensure the crane safety:

- a) Hoisting limit switch
- b) Hook safety device
- c) Lowering limit switch
- d) Two-way hydraulic lock
- e) Balance valve
- f) Relief valve

3.14 Air conditioning and heater

The operator's cab is equipped with special air conditioning and heater for vehicle.

3.15 Counterweight

Under standard configuration, the counterweight system consists of one 4 t fixed counterweight

plate, one 4 t auxiliary counterweight, one 5 t lower movable counterweight, which are 13 t in total. The fixed counterweight and auxiliary counterweight are connected through bolts, and the movable counterweight is lifted through a hydraulic cylinder.

4 Specifications, chassis

Chassis	Engine	Model	YCK10380-B500
		Rated power	kW/r/min 280/1900
		Max. output torque	N.m/r/min 1800/1100-1450
		Manufacturer	Guangxi Yuchai Machine Co., Ltd.
	Model	ZLJ5461JQZV5	
	Type	II	
	Code	ZLJ5461JQZV5.1R	
	Limits for exhaust pollutants and smoke	Comply with BS V (CEV/TREM)	
	Manufacturer	Zoomlion Heavy Industry Science & Technology Co., Ltd.	

For detailed information, please refer to *Technical Specifications, Special Purpose Chassis for Truck Crane*.

Appendix

Table – Main purchased parts and manufacturers

Ser. No.	Description	Manufacturer	Remarks
1	Main valve	Changde Zoomlion Hydraulic Co., Ltd.	
2	Plunger pump (variable pump)	Hi-tech Hydraulic Co., Ltd.	
		Liyuan Hydraulic (Suzhou) Co., Ltd.	
		Sichuan Push Drive Co., Ltd.	
		Wuxi Weifu Fine Machinery Mechanical Manufacture Co., Ltd.	
	Dual gear pumps	Hefei Wanye Hydraulic Co., Ltd.	
3	Winch motor	Beijing Huade Hydraulic Industry Co., Ltd.	
		Hi-tech Hydraulic Co., Ltd.	
		Liyuan Hydraulic (Suzhou) Co., Ltd.	
		Wuxi Weifu Fine Machinery Mechanical Manufacture Co., Ltd.	
		Avic Liyuan Hydraulic Co., Ltd.	
4	Winch reducer	Zhuzhou Gear Co., Ltd.	
5	Slewing motor	Hi-tech Hydraulic Co., Ltd.	
		Avic Liyuan Hydraulic Co., Ltd.	
6	Slewing reducer	Xuzhou Keyuan Hydraulic Co., Ltd. Tongshan County Branch Company	
		Shanghai Wanhui Mechanical Manufacture Co., Ltd.	
		Zhuzhou Gear Co., Ltd.	
		Taian Taishan Fusheng Gear Co., Ltd.	
7	Slewing ring	Yantai Haiying Mechanical Co., Ltd.	
		Yantai Haoyang Mechanical Co., Ltd.	
8	Telescopic cylinder	Hunan Teli Hydraulic Co., Ltd.	
9	Derricking cylinder	Hunan Teli Hydraulic Co., Ltd.	
10	Horizontal cylinder	Hunan Teli Hydraulic Co., Ltd.	
11	Vertical cylinder	Hunan Teli Hydraulic Co., Ltd.	
12	Balance valve – telescoping mechanism	Changde Zoomlion Heavy Industry Science & Technology Hydraulic Co., Ltd.	
13	Balance valve – derricking mechanism	Changde Zoomlion Heavy Industry Science & Technology Hydraulic Co., Ltd.	

14	Balance valve – hoist mechanism	Changde Zoomlion Heavy Industry Science & Technology Hydraulic Co., Ltd.	
15	Wire rope	Shanghai Junwei Sling Co., Ltd.	
		Jiangsu Safety Steel Rope Co., Ltd.	
16	Hook	Shangdong Hong Ruida Mechanical Co., Ltd.	
		Juli Sling Co., Ltd.	
		Changsha Lanying Industry Co., Ltd.	
17	Load moment limiter	Zoomlion Electrical Appliance Company	
18	Operator's cab assy.	Yangzhou Shenzhou Vehicle Interior Decorative Parts Ltd., Co.	

Note:

The equipment fitted in the crane is subject to changes due to design improvements or other reasons. Therefore, the above table is for reference only.